

Accessibility Guide for Splashdown Poole.

www.splashdownwaterparks.co.uk

01202 740500

Splashdown Poole
Tower Park,
Yarrow Road,
Poole, Dorset,
BH12 4NY



Introduction

Splashdown Poole is an all action waterpark located on Tower Park, Poole and Bournemouth's largest premium leisure complex.

Please read this guide for more information and don't hesitate to get in touch if you have any further questions before your visit.

Level Access

Splashdown is located in the middle of Tower Park. If you park on the south side of Tower Park (the Cinema and Pizza hut end) you will find an accessible ramp behind the entrance stairwell of Lemur Landings Soft Play (please see picture A). If you arrive from the north side of Tower Park (near Tesco) you will find the accessible ramp next to Days Restaurant (please see picture B), if you arrive in the main car park the nearest accessible ramp is between Candy Cabin and KFC (please see picture C).



Picture A



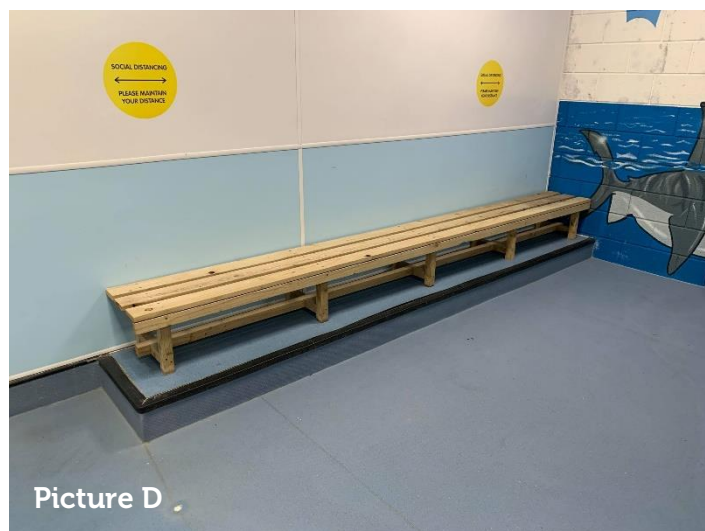
Picture B

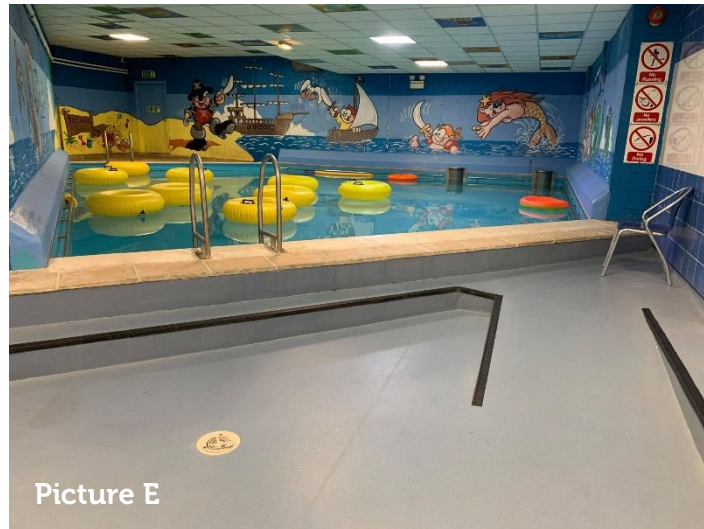


Once inside Splashdown, the attraction is situated across many levels. At the entrance, the tills are on the ground level which have entrance gates which are 630mm wide and 910mm wide. The changing rooms, toilets and accessible toilet are also on this level. The doorway to this toilet is 900mm wide. The café and seating area is slightly elevated, by three steps, but there is a ramp just to the right of the entrance reception on arrival. At its thinnest it is 1020mm wide.

The changing rooms have cubicles with doorways 530mm wide and larger 'family' cubicles with doorways 940mm wide.

Through the changing rooms is Ricky's Reef, one of our under 7's facilities, to get here is totally step free, but the benched seating area here is slightly raised by 170mm (see picture D), there is a ramp (please see picture E) which is 1020mm wide up to the pool and there is a lip to enter the pool which is 240mm high (also see picture E).



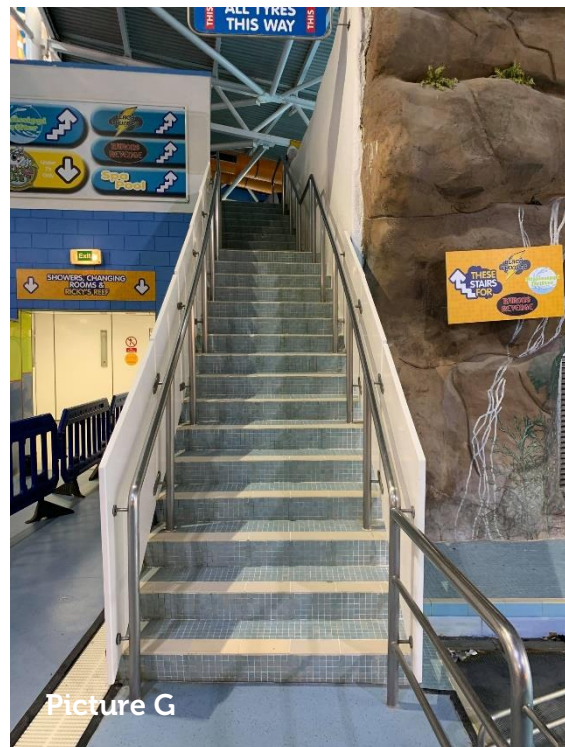


Picture E

You can also access the showers and main splash area of the waterpark from the changing rooms, again all step free. From here, to get to any of the other areas for under 7's, the jacuzzi or bubble bench or the start of any rides the only access is up staircases (please see picture F & G).

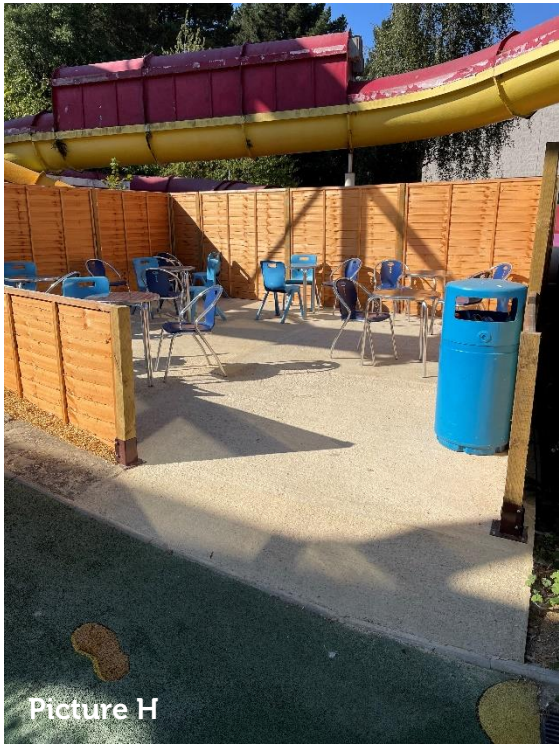


Picture F

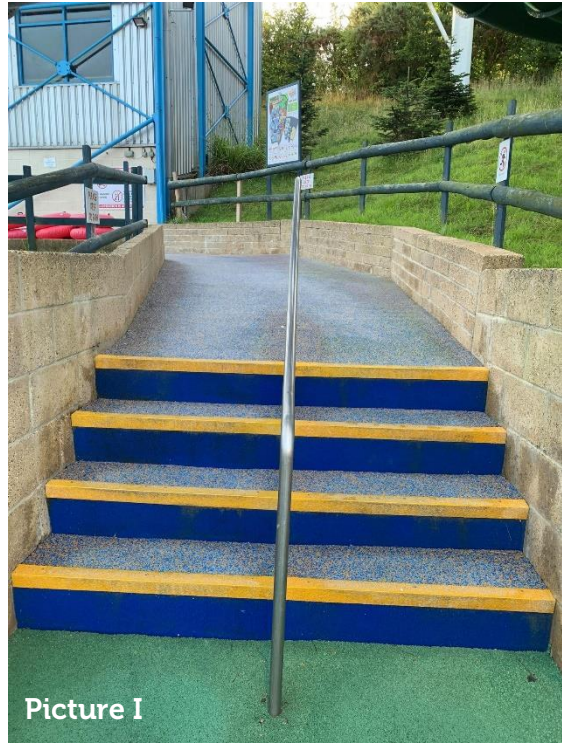


Picture G

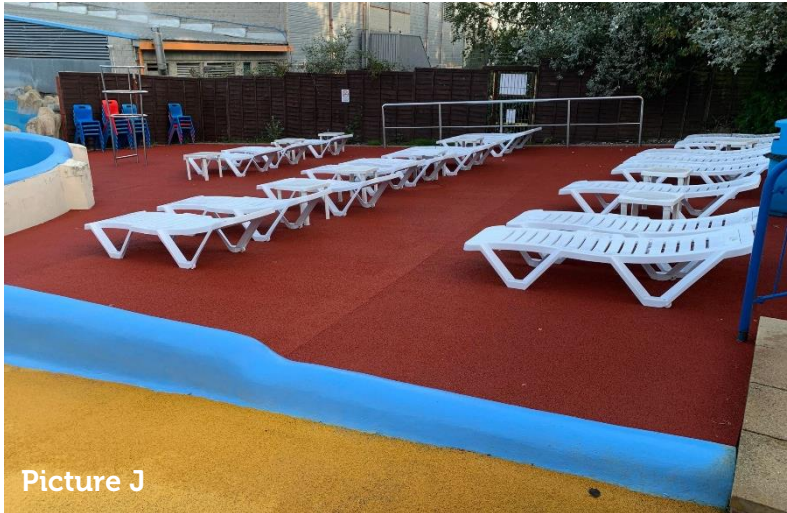
Outside, there is a ramp which leads to an outside spectating area, with a small ramp leading to this area (please see picture H). To get to the outside rides, splash pool or second outside spectating area there are four steps halfway up the ramp (please see picture I) here there is a width of 960mm between the wall and handrail. The splash pool entrance is a graduating ramp getting deeper the further into the pool you go up to a deepest point of 0.6m. The sunbed area has a small lip to enter (please see picture J) which is 130mm tall and the spectating area has a series of steps (see picture K).



Picture H



Picture I



Picture J



Picture K

Parking

At Tower Park there is a drop off point in front of Pure Gym on the left-hand side as you enter the car park. From here it is a short level walk up to the main concourse, you will find Splashdown up the ramp on the left-hand side. There is a slight incline (please see picture L for the direction you need to walk in). If you are a blue badge holder there are some yellow parking bays situated on the left just past the drop off area and on the right-hand side opposite KFC. You will need to head in the same direction as you would from the drop off area.



Emergency Evacuation

Our staff are fully trained in evacuation procedures and have set instructions for disabled visitors. If the fire alarm sounds all customers will be led to safety by staff/the fire brigade.

Additional Information

We have a variety of rides here at Splashdown Poole, all varying in difficulty and exiting in to different areas. There are 7 rides which exit into catch trays and all the rest exit into pools with varying depths. 5 rides are dark inside and 3 with sound and lighting effects. Full information about our slides can be found on our slide guide on the 'explore the park' page on our website. Of course, staff will happily give more information on site too.

We have larger menus available at our café, please ask a member of staff.